



**16605 N. 28th Ave – Suite 102
Phoenix, AZ 85053
800-736-1237**

Quality Steel Fabrication and Erection since 1995

Commercial Buildings
Correctional Facilities
Educational Facilities
Healthcare
Industrial
Mechanical Pipe Supports
Mining
Parking Structures
Shopping Malls
Solar
Sports Facilities



AZ: 107652 / City of Phoenix C09-2001
NV: 040695 / Clark County, NV – Fab. ID 222
CA: 715892 / City of Los Angeles 1587

Our Strength Is In Our People.



Thank you for your interest in Triad Steel Services, Inc.

Simply stated, our goals are:

- Provide top quality steel fabrication and erection services
- Safely perform our work at our jobsites and in our fabrication facility
- Be the least of our customer's worries
- Always do what we say we're going to do

If you have a few minutes, please take a look at the enclosed letters of recommendation and photos of our completed projects.

If you'd like to know more about our company, please give us a call at 800-736-1237 or contact us by email at:

Chuck Borre'	V.P. of Operations
Steve Hamre	Sales & Estimating

cborre@triadsteel.com
shamre@triadsteel.com

Additional information is also available on our website: **triadsteel.com**.

Thank you.

November 3, 2020

Triad Steel Services, Inc.
16605 N. 28th Ave, Suite 102
Phoenix, Az 85053

Attention: Chuck Borre

Reference: Letter of Recommendation

Dear Mr. Borre,

Layton Construction and Triad Steel have worked together on numerous projects over the years and I myself have had the pleasure of recently working with Chuck Borre and Erik I'Anson on the Rivulon Commons Buildings A&B and C&D. Four Class A Office Buildings in Gilbert Arizona completed in January 2019 and September 2019 respectfully. All four buildings, each roughly 100,000 SF concrete tilt with steel framing, beams, and roof joists all required an incredible amount of attention to planning and coordinating the steel packages with the concrete tilt panels and procuring and tracking material to ensure a fast passed schedule was met. Chuck and team's continuous attention to the detailing process, insightful tracking of the procurement for the project and desire to come together to vet through designs for intricate exterior steel window plates and exterior building canopy details was instrumental to a successful completion of the project. It was a pleasure having the opportunity to continue the process with the Triad team on both sets of buildings back to back. Layton Construction's core moto is "Constructing with Integrity" and I feel that Triad Steel shares in that value. I hope to continue to do more work with Triad Steel and would recommend them to any Contractor looking to partner with a great steel fabricator. Please feel free to contact me with any questions at (520)370-9559.

Regards,



Kelly Sussman
Project Manager
Layton Construction Company

Date: August 9, 2020

RE: Triad Steel Services, Inc.

To Whom it May Concern:

Triad Steel was selected as a design assist and construction partner for the new Mark Anthony Brewing (MAB) facility currently underway in Glendale, Arizona. Triad was selected based on their past performance with Layton Construction.

The MAB project has an incredibly compressed, demanding construction schedule. The design-build team was given 2 weeks to complete the structural design and tasked with constructing and drying in a 900,000 SF concrete tilt and joisted steel building in just over 3 months. A challenging endeavor which the team did achieve on this high-profile project.

Triad was a key reason for the team's success. They jumped in at the design kick-off meeting with design and constructability suggestions. They coordinated details with the architect, structural engineer, concrete tilt wall designer, and other members of the design team to effectively produce steel shops, erection drawings, and joist designs concurrently with the initial permit submittal drawings. The schedule required them to have embed materials on site within 2 weeks of design completion and crews ready to begin steel erection within 6 weeks. Triad hit it out of the park.

Their meticulous attention to detail and follow-up was amazing. I would willingly and eagerly team with them on all my projects and highly recommend them to anyone looking for an excellent steel contractor to partner with.

Sincerely,



Jim Hardison
Sr. Project Manager

August 3, 2017

To Whom It May Concern:

SidePlate Systems, Inc. and Triad Steel Services, Inc. have worked together on two completed projects, most recently Scottsdale Quarter Block M (Scottsdale, AZ), which was completed in 2015. SidePlate Systems, Inc. provided connection designs for the lateral force-resisting moment frames on the project.

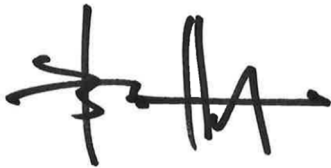
SidePlate Systems, Inc. offers a suite of steel frame connection technologies that deliver economical solutions for general building applications, as well as for high-performance seismic and blast-resistant building designs. SidePlate[®] connection technologies are designed to lower costs, minimize tonnage, shorten fabrication time, increase erection speed, and improve safety. For over 20 years, SidePlate Systems has partnered with construction and design professionals to deliver cost savings and performance on projects throughout the US.

The Scottsdale Quarter Block M project was the first project in the western US to utilize SidePlate[®] field-bolted connection technology. Triad Steel was instrumental to the introduction and specification of SidePlate technology on Block M, which brought value in terms of cost and schedule savings, and allowed the project to be completed on time and within budget.

Throughout the fabrication and erection processes, SidePlate was impressed by the commitment to excellence demonstrated by the team at Triad Steel. The professionalism, commitment, and contributions from Triad Steel positively impacted the project process, and enabled the successful completion of the project.

SidePlate Systems, Inc. looks forward to our next opportunity to partner with Triad Steel Services, Inc.

Sincerely,



Brett Hart, PE, SE, PEng
Director of Engineering Operations

From: [Michael Forys](#)
To: [Chuck Borre](#)
Subject: RE: Triad Steel / HGC - Letter
Date: Tuesday, November 15, 2016 4:21:00 PM

Mr. Borre:

I am writing to thank you for the quality service provided by Triad Steel on the Gardens Casino project. As with any project, there were challenges, but your prompt problem solving solutions and putting your client first, made it go very smoothly. You and your team always had a sense of urgency that meant I never had to worry about material deliveries, as well as an attention to detail that made the erection look easy. I could not be more satisfied with your service, and look forward to working with you on future projects.

Sincerely,

Michael Forys

Project Manager | Swinerton Builders

17731 Mitchell North, Suite 200 | Irvine, CA 92614
T 949.622.7000 | F 949.477.3085 | C 949.981.0542
mforys@swinerton.com | www.swinerton.com



HEADQUARTERS IN:

5826 Brisa Street
Livermore, CA 94550
Phone 925.606.3000
Fax 925.606.3003
shames.com

COLORADO OFFICE:

9364 Teddy Lane
Suite 202
Lone Tree, CO 80124
Phone 303.253.3200
Fax 303.660.5517

May 25, 2016

Jim Dalton, Director of Project Management
TRIAD STEEL SERVICES, INC.
16605 N. 28th Avenue, Ste A102
Phoenix, AZ 85053

RE: LETTER OF RECOMMENDATION

Dear Jim:

Thank you for the professional steel services your firm is providing for Shames Construction at the Serramonte Center project in Daly City, California. This project has had a difficult design and permitting process and you have performed well. Given the critical importance of timeliness and ongoing communication, you have maintained both, while delivering a quality product.

We appreciate having you as part of the core team and look forward to continuing our successful partnership! I would be delighted to recommend you for other projects that are of interest to you. I can be reached at cshames@shames.com.

Sincerely,
SHAMES CONSTRUCTION CO., LTD.

A handwritten signature in blue ink that reads "Carolyn Shames". The signature is fluid and cursive, with a long horizontal stroke at the end.

Carolyn Shames
President + CEO



January 3, 2013

RE: Triad Steel Letter of Recommendation

To Whom It May Concern:

It is my pleasure to highly recommend Triad Steel. I have had the privilege of working with them over the past year at the Solana Solar Generating Station in Gila Bend, Arizona. Solana is a 2,000 acre solar plant west of Gila Bend where Triad has been a subcontractor to Kitchell Contractors for this project since mid 2012.

They are a part of the team that has successfully furnished and installed specially designed steel supports in approximately 2,000 acres of mirror fields as well as furnished and installed 50 foot tall steel support structures all totaling over 3 million dollars of work on a stringent fast tracked schedule.

They have established an excellent relationship with Kitchell as well as our client on the Solana project. Kitchell continues to depend on Triad for additional work on this project and will not hesitate to utilize their services on any upcoming projects that require their expertise and dedication.

Whatever it is you need done and it's within their power, it will get done as quickly and efficiently as possible. Personally, I have enjoyed watching this hard-working company evolve into one of the most important members of our Kitchell Team at the Solana project.

If you have any questions about their qualifications, please feel free to contact me.

Sincerely,

A handwritten signature in black ink that reads 'Tim Thornburg'.

Tim Thornburg,
Sr. Project Manager
Kitchell Contractors, Inc. of Arizona
tthornburg@kitchell.com
Cell: 602.397.1834

Kitchell Contractors

1707 East Highland | Suite 200 | Phoenix, Arizona 85016 | Phone 602.222.5300 | www.kitchell.com
Risk Management Fax 602.222.5367 | Exec/Marketing Fax 602.263.8591 | Operations Fax 602.263.8593 | Estimating Fax 602.263.8876



December 21, 2012

Re: Triad Steel Services

To whom it concerns,

Triad Steel Services furnished and installed the structural steel on the Global Rehab Hospital project in Scottsdale, Arizona. The project was a \$12m, 52,000 sf, 52 bed rehabilitation facility and was constructed in approximately 10 months.

Triad Steel was a key subcontractor that contributed to the successful completion of an extremely complex facility and with an aggressive schedule. Their responsiveness on late design changes that occurred on the project was greatly appreciated and is one of the things that set them apart from other subcontractors.

Triad's project team performed in an exemplary manner and was a true team member. The Project Manager, Jim Dalton, provided outstanding service and was a true professional throughout the project. Triad is a valued Sub-Contractor Partner.

We enthusiastically recommend the Triad team of professionals. If you have any questions, please feel free to contact me at 520-548-3316.

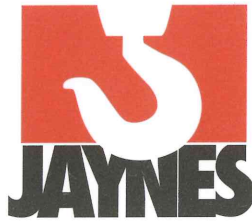
Sincerely,
SUNDT CONSTRUCTION, INC.

Jim Drago, P.E.
Senior Project Manager

Building Integrity Since 1890_{sm}

2620 S. 55TH ST. TEMPE, AZ 85282 480.293.3000 • WWW.SUNDT.COM

CONTRACTOR LICENSES: AZ: ROC068012-A ROC068014-L-09 ROC078799-L-37 ROC076101-L-11 CA: 453175-A,B
ROC068013-b-01 ROC078088-1-04 ROC076561-1-39 ROC067653-b NV: 22067-A-B



March 13, 2012

Mr. Chuck Borre' – Vice President of Operations
TRIAD Steel Services Inc.
2501 W. Behrend Dr., Suite 21
Phoenix, AZ 85027

Re: Palomar College Industrial Technology Center, San Marcos, CA
Letter of Recommendation and Appreciation

Dear Chuck,

Please except this letter of recommendation and appreciation for your truly outstanding structural and miscellaneous steel work on this project.

As you know, this was a challenging California-DSA school project, including: unusual & unique building architecture, multiple adjacent building structures, interior heavy lift cranes, multiple exterior skin systems, and difficult site access constraints. TRIAD Steel met and exceeded these challenges, completing its steel work on time and on budget.

I was particularly impressed with your ability to navigate the logistics of fabricating your structural steel in Arizona, coordinating the necessary DSA steel inspections, and installing it in California. Your office and field staff handled this process seamlessly.

Additionally, your work to effectively deal with changing project conditions, plan revisions, and the multitude of owner requested cost proposals was timely and professional. TRIAD was clearly a strong "team player" that the owner, architect, construction manager, and Jaynes all frequently relied upon to help solve challenging job site issues. You did so frequently and with superior results.

Chuck, what I remember most is that ***TRIAD Steel always did what they said they would do, when they said they would do it.*** Accordingly, please feel free to use me as a reference, if I can be of any help recommending TRIAD to perform steel work on other projects, and to any of your other prospective clients and owners. Of course, we look forward to working with you again in the near future.

Again, thank you for your outstanding efforts and results on this project.

Sincerely,

Douglas J. Muirheid
Senior Project Manager





WILLIAM F. HEADLEY
Senior Vice President

August 24, 2010

Dear Lloyd:

Based on my personal experience and our company's association with Triad Steel over the past several years, I am happy to endorse your firm as one of our most highly regarded structural and miscellaneous steel trade contractors. Triad's thoughtfulness, responsiveness, and candor during the preconstruction phases of our projects have helped us set up our projects for success with respect to pricing, options analysis, and constructability. Your firm's cooperation and constant attention to potential issues in the field have helped our teams resolve many construction and design concerns before they eventually affected cost, schedule, and quality.

As I have been personally working with your firm for over three years and our two firms have worked together for over seven years, your in-depth knowledge of Structural and Miscellaneous Steel has been most helpful in our mutual endeavors to deliver outstanding projects to our clients under budget and on schedule. Some of these projects include Banner Health Mesa Corporate Center, Cox Deer Valley Technology Center, Fairmont Mixed Use Project, and the NAU Laboratory Facility.

I am confident that Triad's competence and experience will be a valued asset to any project team and very much appreciated by those involved with the project.

Please feel free to contact me if I can be of further assistance.

Respectfully,

HOLDER CONSTRUCTION COMPANY

William F Headley
Sr. Vice President

cc: File



Relationships. Solutions. Value. ...Since 1937.

March 8, 2010

Lloyd Brown
Triad Steel Services, Inc.
2501 W. Behrend Drive, #21
Phoenix, AZ 85027

RE: Letter of Recommendation

Dear Lloyd,

Please accept this letter of appreciation on behalf of CORE Construction Services of Arizona, Inc. in recognition of the outstanding performance of Triad Steel Services on the Santa Cruz Justice Complex project.

Triad Steel's dedicated staff have guided this project through the many obstacles that were presented and have demonstrated with great competence that your by-line of being a full service contractor are real and not just words. This project from the very beginning was constrained severely on scope, schedule, and budget and yet the final results exceeded all of CORE's and the owner's collective expectations. All of this was achieved while keeping the project well ahead of schedule.

I can emphatically state that each time I have talked to our project management team about this project I have heard nothing but positive comments about your commitment to the project.

In conclusion, as this project nears its final conclusion, I can confidently say it is a job well done and I would welcome the opportunity to share our success story with anyone considering your firm on a future building project.

Respectfully,

A handwritten signature in blue ink, appearing to read "Dennis L. Barber". The signature is stylized with a large loop at the beginning and a cross-like shape at the end.

Dennis L. Barber,
Vice President
CORE Construction Service of Arizona, Inc.



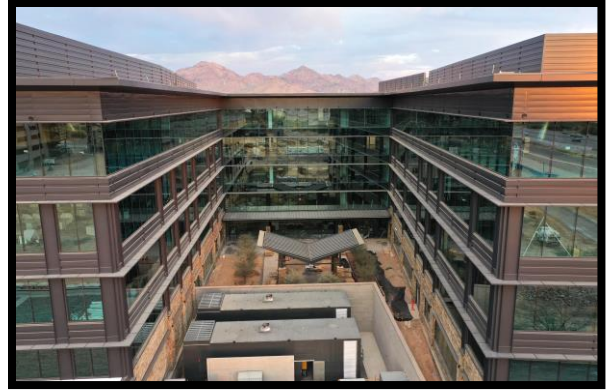
16605 N. 28th Ave – Suite 102
Phoenix, AZ 85053
800-736-1237

Project: **Nationwide**

Location: **Scottsdale, AZ**

Fab. Weight: **3,400 Tons**

Notes: **Fast Erection
Schedule**



Project Type: **Commercial Office Building**

Description: **5-Story Steel Framed Bldg**

Owner: **Nationwide Realty
Investors**

Architect: **The Columbus Arch. Studio**

Engineer: **Caruso Turley Scott**

Triad's Customer: **Layton Construction**



AZ: 107652 / City of Phoenix C09-2001

NV: 040695 / Clark County, NV – Fab. ID 222

CA: 715892 / City of Los Angeles 1587



16605 N. 28th Ave – Suite 102
Phoenix, AZ 85053
800-736-1237

Project: **Amtrak Maintenance Facility**

Location: **Los Angeles, CA**

Fab. Weight: **550 Tons**

Notes: **BIM Project**



Project Type: **Industrial**

Architect: **King Stubbins**

Description: **Train Maintenance Facility**

Owner: **Amtrak**

Triad's Customer: **Kemp Brothers Const.**



AZ: 107652 / City of Phoenix C09-2001

NV: 040695 / Clark County, NV – Fab. ID 222

CA: 715892 / City of Los Angeles 1587

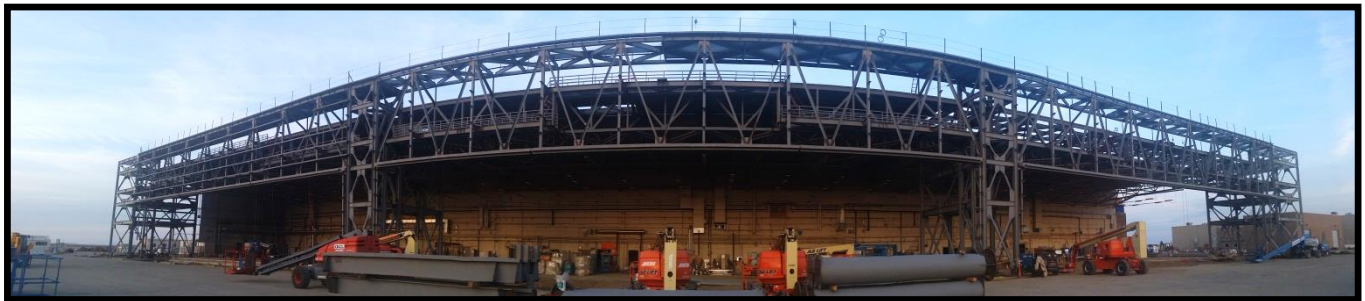
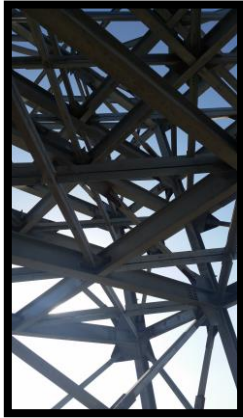


16605 N. 28th Ave – Suite 102
Phoenix, AZ 85053
800-736-1237

Project: **P-378 NAS F35
Hangar**

Location: **Lemoore, CA**

Fab. Weight: **946 Tons**



Project Type: **Government**

Architect: **Jacobs**

Description: **Expansion of Existing Hangar**

Engineer: **Jacobs**

Owner: **NAVFAC**

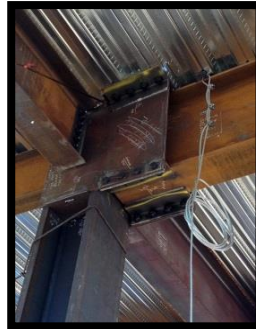
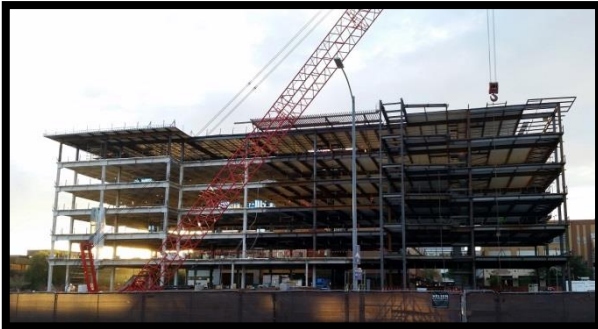
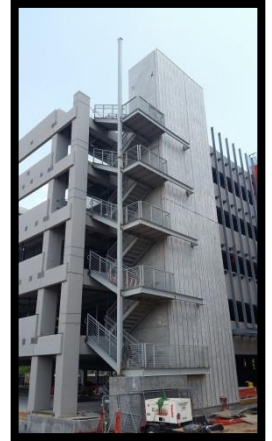
Triad's Customer: **Straub**



AZ: 107652 / City of Phoenix C09-2001

NV: 040695 / Clark County, NV – Fab. ID 222

CA: 715892 / City of Los Angeles 1587



Project Type: **Commercial** Architect: **Nelson Partners**
Description: **6-Story Office Bldg + Garage** Engineer: **PK Associates**
Owner: **Glimcher Realty Trust** Triad's Customer: **IBEX Construction**



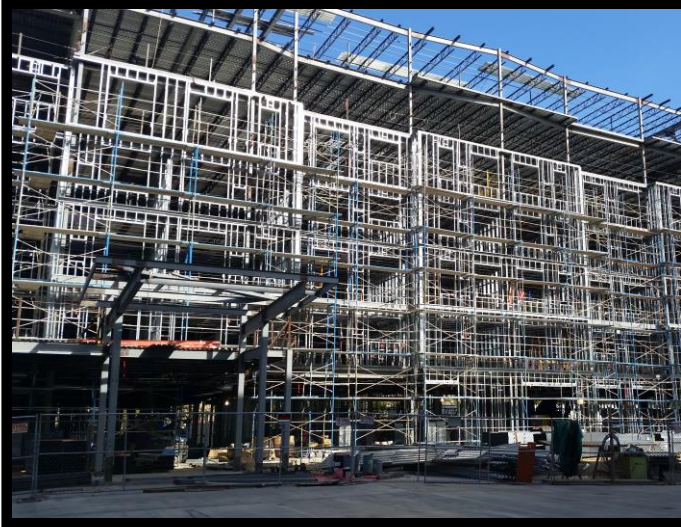
16605 N. 28th Ave – Suite 102
Phoenix, AZ 85053
800-736-1237

Project: **Hyatt House**

Location: **Irvine, CA**

Fab. Weight: **437.5 Tons**

Notes: **Tight Site Project**



Project Type: **Hotel**
Description: **7-Story Steel Framed Bldg**
Owner: **H.E. Irvine, LLC**

Architect: **LK Architecture**
Engineer: **SCA Consulting Engineers**
Triad's Customer: **KPRS Construction**



AZ: 107652 / City of Phoenix C09-2001
NV: 040695 / Clark County, NV – Fab. ID 222
CA: 715892 / City of Los Angeles 1587



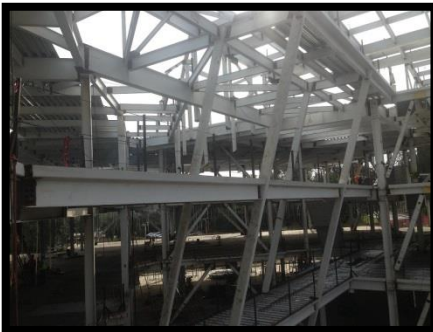
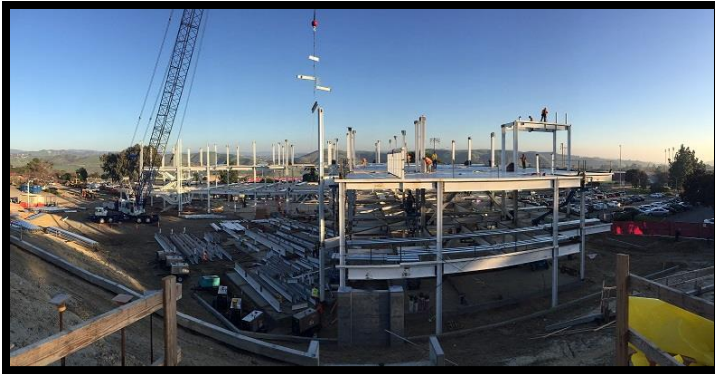
16605 N. 28th Ave – Suite 102
Phoenix, AZ 85053
800-736-1237

Project: **Saddleback College
Science Building**

Location: **Mission Viejo, CA**

Fab. Weight: **1,050 Tons**

Notes: **DSA Project**



Project Type: **Education**
Description: **3 Story Steel Framed
Structure**
Owner: **South Orange County
Community College**

Architect: **Dougherty & Dougherty
Architects**
Engineer: **Saiful Bouquet**
Triad's Customer: **C.W. Driver**



AZ: 107652 / City of Phoenix C09-2001
NV: 040695 / Clark County, NV – Fab. ID 222
CA: 715892 / City of Los Angeles 1587

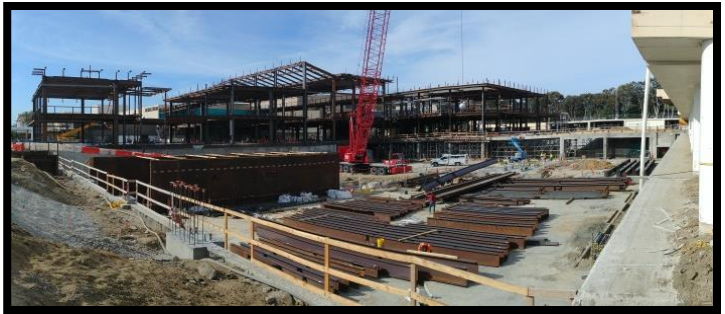


16605 N. 28th Ave – Suite 102
Phoenix, AZ 85053
800-736-1237

Project: **Hillsdale Shopping Center**

Location: **San Mateo, CA**

Fab. Weight: **4,200 Tons**



Project Type: **Commercial**

Architect: **ELS**

Description: **Five New Building Structures**

Engineer: **KPFF**

Owner: **Bohannon Development**

Triad's Customer: **CW Driver**



AZ: 107652 / City of Phoenix C09-2001

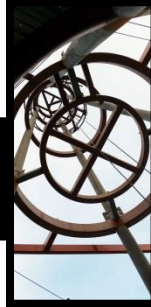
NV: 040695 / Clark County, NV – Fab. ID 222

CA: 715892 / City of Los Angeles 1587



16605 N. 28th Ave – Suite 102
Phoenix, AZ 85053
800-736-1237

Project: **Marina Park**
Location: **Newport Beach, CA**
Fab. Weight: **405 Tons**
Notes: **Beachfront Project**



Project Type: **Community**

Description: **4 Buildings**

Owner: **City of Newport Beach**

Architect: **Bundy Finkel Architects**

Engineer: **STB**

Triad's Customer: **KPRS Construction**



AZ: 107652 / City of Phoenix C09-2001
NV: 040695 / Clark County, NV – Fab. ID 222
CA: 715892 / City of Los Angeles 1587



16605 N. 28th Ave – Suite 102
Phoenix, AZ 85053
800-736-1237

Project: **Lorry/TJX/Prologis
Riverside Bldg #1**

Location: **Phoenix, AZ**

Square Feet: **1,417,000**

Notes: **314 Truckloads**



Project Type: **Industrial**

Description: **Tilt Building Warehouse**

Owner: **Marshalls of MA, Inc.**

Architect: **Ware Malcomb**

Engineer: **TLCP**

Triad's Customer: **Layton**



AZ: 107652 / City of Phoenix C09-2001

NV: 040695 / Clark County, NV – Fab. ID 222

CA: 715892 / City of Los Angeles 1587



16605 N. 28th Ave – Suite 102
Phoenix, AZ 85053
800-736-1237

Project: **Playhouse Plaza**

Location: **Pasadena, CA**

Fab. Weight: **1,115 Tons**

Notes: **Tight Site Project**



Project Type: **Commercial Office Building**

Architect: **Gensler**

Description: **5-Story Steel Framed Bldg**

Engineer: **Saiful-Bouquet**

Owner: **IDS Real Estate Group**

Triad's Customer: **KPRS Construction**



AZ: 107652 / City of Phoenix C09-2001

NV: 040695 / Clark County, NV – Fab. ID 222

CA: 715892 / City of Los Angeles 1587



**16605 N. 28th Ave – Suite 102
Phoenix, AZ 85053
800-736-1237**

Project: Grace Court Bldg 6

Location: Phoenix, AZ

Fab. Weight: 953 Tons



GRACE COURT

Project Type: Office Bldg

Architect: DCSW Architects

**Description: 6-Story, Steel Beam
Framing and Metal Deck,
Steel Joist at Roof**

Owner: J.D.O. LLC

Triad's Customer: D.L. Withers



AZ: 107652 / City of Phoenix C09-2001

NV: 040695 / Clark County, NV – Fab. ID 222

CA: 715892 / City of Los Angeles 1587

